

CAPTAIN HARBOR FRIDAY NIGHT SERIES

Presented by:
BHC, IHYC, OGYC, RYC



2016 Sailing Instructions

RULES This series will be governed by the Racing Rules of Sailing, the YRALIS Non-spinnaker Rules and by these sailing instructions.

SCHEDULE This series will consist of four races with post-race parties to follow: June 3rd Riverside Yacht Club, June 17th Indian Harbor Yacht Club, July 8th Belle Haven Club, July 22nd Old Greenwich Yacht Club.

ELIGIBILITY All boats shall register on-line at: www.yachtscore.com or by visiting the Indian Harbor Yacht Club website (www.indianharboryc.org) or the Riverside Yacht Club website (www.riversideyc.org). The entry fee is \$10.00. Boats not registered will be assigned a rating of -99 and scored accordingly.

TEAMS Three boat teams can be declared using the supplemental form (found on the www.yachtscore.com event page) no later than June 2, 2016.

SAILS No spinnakers, gennikers or bloopers. No more than one sail at a time in the fore triangle except during a seaman-like sail change. Whisker poles or spinnaker poles may be used. When in use, it shall be attached to the foremost mast.

COMMUNICATIONS The Race Committee will monitor and communicate on VHF channel 72. In the event Code Flag Lima is hoisted from the Signal Boat accompanied by one sound signal prior to the warning signal, the Race Committee may amend these sailing instructions orally on the water.

START/FINISH The start/finish line shall be between a white or yellow flag on the Signal Boat and a nearby mark. The start/finish area will be located approximately 200 yards south of Red Rock buoy. When starting, the Signal Boat is to be left to starboard and the starting mark to port. When finishing, the finish is in the direction of the last mark. The Race Committee may reposition the finish line to square the line to the course.

CLASSES	Class	PHRF Band	Class Flag
	I	PHRF < 84	Numeral pennant 1
	II	PHRF 84 to 132	Numeral pennant 2
	III	PHRF > 132	Numeral pennant 3

STARTING SEQUENCE The starting sequence will be in accordance with RRS 26. Below is the expected timing. Note however that the Race Committee may introduce a break between starts without postponing.

	≈1854	- pay attention -	A series of short blasts
Division I	1855	Division Warning	1 sound – raise Division Flag(s)
	1856	Division Preparation	1 sound – raise P, I, Z, Z with I, or black flag
	1859		1 sound - drop P, I, Z, Z with I, or black flag
	1900	Division start	1 sound - drop Division Flag(s)
Division II	1900	Warning	1 sound – raise Division Flag(s)
	1901	Preparation	1 sound – raise P, I, Z, Z with I, or black flag
	1904		1 sound - drop P, I, Z, Z with I, or black flag
	1905	Division start	1 sound - drop Division Flag(s)
Division III	1905	Warning	1 sound – raise Division Flag
	1906	Preparation	1 sound – raise P, I, Z, Z with I, or black flag
	1909		1 sound - drop P, I, Z, Z with I, or black flag
	1910	Division Start	1 sound - drop Division Flag

SIGNALS	Individual Recall	Code flag X	White with blue cross	One horn signal
	General Recall	First Substitute	Yellow and blue triangle	Two horn signals
	Postponement	Answer Pennant	Red and white stripes	Two horn signals.
	Abandonment	Code flag N	Blue and white checks	Three horn signals.
	Shorten Course	Code flag S	White with blue square	Two horn signals

COURSES Pre-configured courses (Addendum B) will be signaled by a letter beneath the class number on the Committee Boat. Classes without a course designation beneath their class number shall sail the course of the next faster rated class to have a course.

The Race Committee may signal twice around by adding a “2” under the course letter. When twice around is indicated, mark T is not part of the course until the finish. For example, if Course A is B-X-Finish, then Course A2 is B-X-B-X-Finish (T).

TIME LIMIT 2100 for all divisions. Boats that do not finish within the time limit shall be scored TLE.

PENALTIES WHILE RACING The first two sentences of rule 44.1 are changed to: ‘A boat may take a One-Turn Penalty when may have broken a rule of Part 2 or rule 31 while racing. However, when she may have broken a rule of Part 2 while in the zone around a mark other than a starting mark, her penalty shall be a Two-Turns Penalty.’

PROTESTS Boats shall announce their intention to protest or any penalty turns taken via VHF #72 when they finish and repeat such announcements until acknowledged by the Race Committee. Protests shall be in writing and delivered to either sponsoring club's Race Committee (or its designee), no later than 2 hours after finishing (the “protest time limit”).

POST-RACE PENALTIES After a race, a boat that may have broken a rule of Part 2 or rule 31 while racing may take a Post-Race Penalty for that incident. The penalty shall be a Scoring Penalty, calculated as stated in rule 44.3(c). However, rules 44.1(a) and (b) apply. The Post-Race Penalty shall be (a) 20%, if taken before the protest time limit, or (b) 30%, if taken after the protest time limit but before the beginning of a hearing involving the incident. A boat’s penalty will be based on the number of starters in that race in her division times the penalty rounded to the nearest whole number. See Addendum C for an example.

PROTEST ARBITRATION Per Appendix T, Section D, arbitration will be held prior to a protest hearing subject to the terms of the Section.

SCORING Corrected times will be based on time-on-time allowances using the YRALIS PHRF non-spinnaker ratings. The Time Correction Factor (TCF) for Time-on-Time scoring will be derived from the PHRF Handicaps using the US Sailing recommended equation of “TCF= A/(B+PHRF)” with A= 650 and B=550. This is a four race series. The Low Point Scoring System will be used. RRS A4 will apply except that: If four races are run then 3 are needed to qualify and the boat’s 4th worst score will be discarded; if three races are run then 2 are needed to qualify and the boat’s 3rd worst score will be discarded; if two races are run then two races are needed to qualify and no score will be discarded. If one race is run, then this will constitute the series. Only boats that qualify will be scored. Boats that do not compete in a given race shall be awarded points equal to the number of boats in her division that started plus one. Boats scored TLE shall be awarded points equal to the number of boats in her division that finished within the time limit plus two. One race constitutes a series.

SAFETY It is the responsibility of skippers and crew to wear US Coast Guard approved life jackets whenever conditions warrant. Furthermore, as a condition of participation in any race, the owner and crew agree that the safety of the boat and her crew and the decision whether or not to start or continue a race is solely their responsibility.

PRIZES Prizes 1st through 3rd will be awarded in each division.

Appendix T, Section D Arbitration

When Section D applies, a boat may take the applicable Post-Race Penalty in Section B without participating in an arbitration meeting.

T5 PROTEST ARBITRATION

T5.1 An arbitration meeting will be held prior to a protest hearing for each incident resulting in a *protest* by a boat involving a rule of Part 2 or rule 31, but only if each *party* is represented by a person who was on board at the time of the incident. No witnesses will be permitted. However,

if the arbitrator decides that rule 44.1(b) may apply or that arbitration is not appropriate, the meeting will not be held, and if a meeting is in progress, it will be closed.

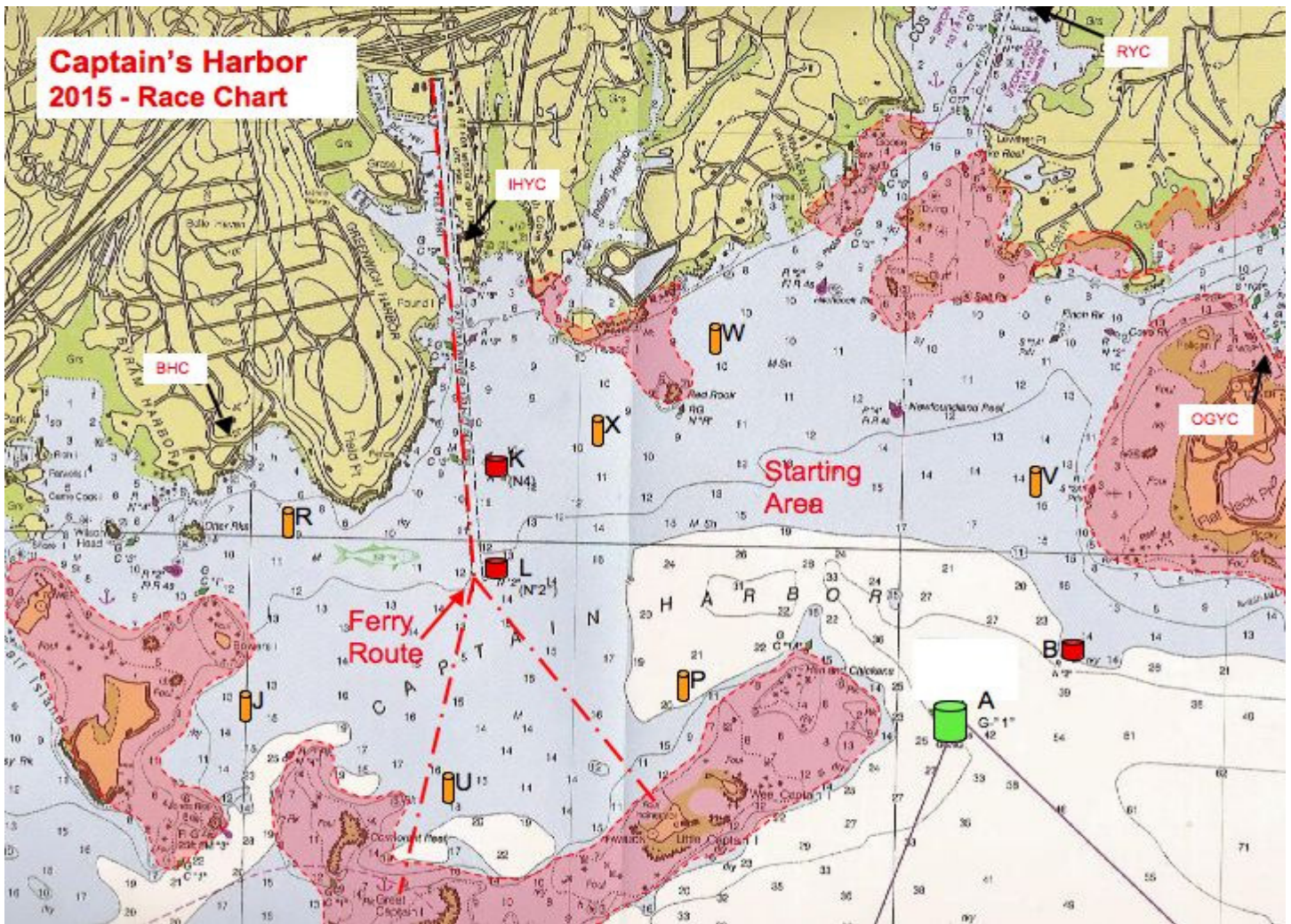
T5.2 Based on the evidence given by the representatives, the arbitrator will offer an opinion as to what the protest committee is likely to decide:

- (a) the *protest* is invalid,
- (b) no boat will be penalized for breaking a rule, or
- (c) one or more boats will be penalized for breaking a rule, identifying the boats and the penalties.

T5.3 A boat that may have broken a rule may take a Post-Race Penalty as provided in Section B. However, the penalty in rule T2.2(a) is available only until the protest time limit or until the beginning of the arbitration meeting, whichever is earlier. During a meeting, a boat may take a penalty by acknowledging her acceptance of the penalty in writing.

T5.4 If a boat asks to withdraw her *protest*, the arbitrator may act on behalf of the protest committee in accordance with rule 63.1 to accept the withdrawal

ADDENDUM A



Exceptions on the racing chart, Addendum A is modified to say:

- (1) Marks D, K & L, may be passed on either hand when not used as turning marks.
- (2) Can C-3, west of Mark K and Nun 2, Flat Neck Point (Mark B) may be disregarded and left on either hand.
- (3) The channel between Cormorant Reef and Great Captain Island shall not be used.
- (4) Red Rock buoy & New Foundland Reef buoy shall be passed on the South Side.
- (5) Hen & Chicken Can C-1A shall be passed on the North Side.
- (6) The passage between Great Captain & Little Captain Islands shall not be used.

The description of Mark T is changed to read "Start/finish mark".

The description of Mark Y is changed to read "Inflatable dropped mark to windward of the start".

A	Bell "G-1" flasher) Little Captain Island E. Reef.	J	Special IHYC Mark off Calf Island.	P	Special RYC Mark North of Wee Captain Island.	V	Special RYC Mark West of Sugar Boat.
B	Red Nun "2", Flat Neck Point.	K	Red Nun "4", Greenwich Harbor.	Q	Special Mark approximately 1/4 mi. to leeward of start.	W	Special RYC Mark 1/4 mi. ENE of Red Rock.
C	Special Mark approx. 1 1/2 mi. to windward of Start. RC may Indicate magnetic bearing.	L	Red Nun "2". Greenwich Harbor.	R	Special BHC Mark off the Belle Haven Club	X	Special IHYC Mark SW of Tweed Island.
D	Red Gong "32-A" (flasher) LIS Mid-Channel Buoy.	M	Special reaching Mark , positioned on a line which is an extension of the starting line.	S	Special Mark approximately 3/4 mi. to windward of the start RC may indicate magnetic bearing.	Y	Special Mark approximately 1/2 mi. to windward of start RC may indicate magn. Bearing.
G	Red Bell "36" Bluefish Shoal.	N	Special Mark approximately 1/2 mi. to leeward of the start.	T	Start & Finish line Mark, adjacent to RC Signal boat, may also be used as Special Mark.	Z	Special Mark approximately 1 mi. to windward of start. RC may indicate magn, bearing.
H	Red Nun "2", Great Captain Island West Reef.	O	Special Mark approximately 100 ft. windward of the starting line.	U	Special IHYC Mark NNE of Great Captain Island Light.		

ADDENDUM B

Course Name	Marks & Rounding Order	Round (leave) all Marks to	Wind is from the	Start area		For R/C Only	
				east end	west end	Finish Direction	2x OK
A	B X	Port	Southeast	2.5	2.5	Upwind	Yes
AT	B X T X	Port		3.5	3.5	Upwind	No
B	B V X	Port		2.7	2.7	Upwind	Yes
D	A V	Port	South	1.5	1.5	Reach	No
E	A V W	Port	180	2.5	2.5	Upwind	Yes
F	A W	Port		2.0	2.0	Upwind	Yes
FT	A W T W	Port		2.8	2.8	Upwind	No
G	P L	Starboard	Southwest	2.0	2.0	Reach	No
GT	P L T P	Starboard	225	4.0	4.0	Downwind	No
H	U L	Starboard		2.6	2.6	Reach	No
HT	U L T U	Starboard		5.2	5.2	Downwind	No
J	L V	Port	West	2.5	2.5	Upwind	Yes
K	L P	Port		2.0	2.0	Reach	No
KT	L P T L	Port		3.5	3.5	Downwind	No
L	L U	Port		2.7	2.7	Reach	No
LT	L U T L	Port		3.75	3.75	Downwind	No
M	J V	Port		4.0	4.0	Upwind	Yes
N	X B	Port	Northwest	2.5	2.5	Upwind	Yes
NT	X B T B	Port		3.5	3.5	Upwind	No
OT	X L B T B	Port		4.6	4.6	Upwind	No
P	Y B	Port		1.5	1.5	Upwind	Yes
R	W A	Starboard	North	2.0	2.0	Upwind	Yes
S	W V A	Starboard		2.3	2.3	Upwind	Yes
ST	W A T A	Port		3.4	3.4	Upwind	No
U	Y P	Port	Northeast	1.5	1.5	Upwind	Yes
UT	Y P T P	Port	45	3.0	3.0	Upwind	No
V	Y U	Port		2.5	2.5	Upwind	Yes
VT	Y U T U	Port		4.0	4.0	Upwind	No
W	Y L P	Port		2.25	2.25	Upwind	No
X	V L	Starboard	East	2.5	2.5	Upwind	Yes
XT	V X L T L	Port	90	4.0	4.0	Upwind	No
Z	V P L	Starboard		2.8	2.8	Upwind	Yes
ZJ	V J	Port		4.0	4.0	Upwind	No

For the designated “T” is to be left to port when used as a rounding mark. When used as a finish mark, finish between T and the adjacent race committee boat from the direction of the last mark.

Note: When the course has been shortened (the RC displays flag S with two sounds), the finish shall be at a rounding mark, between that mark and the adjacent race committee boat displaying flag S. Boats shall finish by crossing between the mark and flag from the course side (the direction of the last mark).

If the RC intends to shorten only specific classes, the class flags of those classes subject to the shortening shall be flown below flag S.